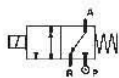


## 3/2 WAY DIRECT ACTING SOLENOID VALVE, G 1/4" ÷ G 1/2"

FOR VACUUM



normally closed

TYPE: D337/338/339CVU1

### TECHNICAL SPECIFICATIONS

Media: vacuum

Ambient temperatur : -10°C ... +50°C

Body material: brass (CW617N EN 12165)

Operator material: stainless steel

Seal material: FKM

Coil power: AC 25VA (holding)

AC 50VA (inrush)

DC 22W

Protection class: IP 65 (with connector)

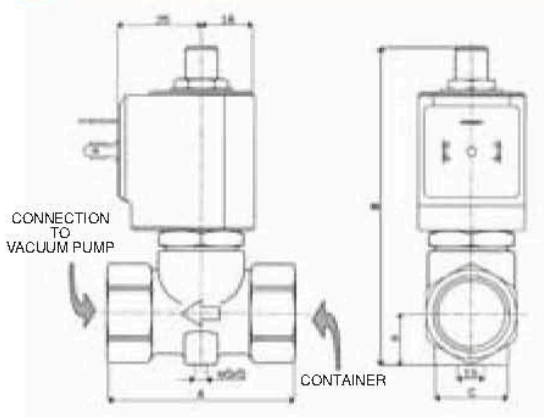


### OPTIONS

2 way version (Ex.code D239DVU1)

### SELECTION TABLE

| VALVE    | G connection | Nominal Diameter | Flow rate kv | OPD max                          | COILS class "H" only |                 |
|----------|--------------|------------------|--------------|----------------------------------|----------------------|-----------------|
|          |              |                  |              |                                  | Code                 | (Volts/Hz)      |
| Code     | -            | (mm)             | (l/min)      | (bar)                            | Code                 | (Volts/Hz)      |
| D337CVU1 | 1/4"         | 10.5             | 21           | - 0,95 bar<br>(vacuum 50 mbar a) | 7278                 | 24/dc           |
| D338CVU1 | 3/8"         | 10.5             | 24           |                                  | 72K1                 | 24 - 50/60      |
| D339CVU1 | 1/2"         | 10.5             | 25           |                                  | 74K1                 | 110/50 - 120/60 |
|          |              |                  |              |                                  | 77K1                 | 230/50 - 240/60 |



### DIMENSIONS & WEIGHTS

| G connection | A    | B    | C    | D    | weight |
|--------------|------|------|------|------|--------|
| -            | (mm) | (mm) | (mm) | (mm) | (Kg)   |
| 1/4"         | 54   | 96.7 | 39   | 15.5 | 0.4    |
| 3/8"         | 54   | 96.7 | 39   | 15.5 | 0.4    |
| 1/2"         | 54   | 96.7 | 39   | 15.5 | 0.4    |